

# MACT300 series

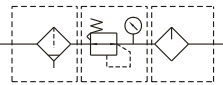
AIR UNITS (F.R.L.UNIT)



Mindman



### Symbol



### Specification

Model	MACT300	
Components	MAF300, MAR301, MAL300	
Bore No.	8A	10A
Port size	1/4	3/8
Medium	Air	
Operating pressure range	0.05~1 MPa	
Proof pressure	1.5 MPa	
Effective orifice	32mm <sup>2</sup>	34mm <sup>2</sup>
Regulated pressure range	0.05~0.85 MPa	
Ambient temperature	-5~+60°C (No freezing)	
Filter element	Standard: 5 μm Option: 40 μm	
Lubricating oil capacity	55c.c	
Min. Flow for oil drip	50 ℓ/min	60 ℓ/min
Recommended lubricating oil	Turbine oil ISO-VG32	
Attachment	Pressure gauge(PG-40), T-type bracket	
Weight	944 g	

※ Standard unit contains semi-auto-drain function when operating pressure below 0.05 MPa.

### Order example

MACT300 - 8A - D - □ - T8 - □

MODEL

BORE SIZE  
8A: 1/4  
10A: 3/8

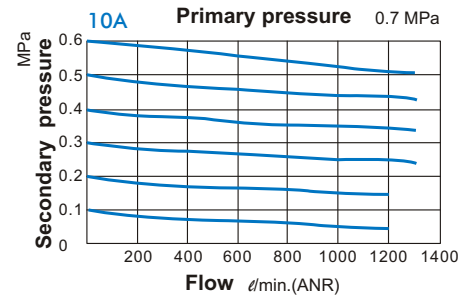
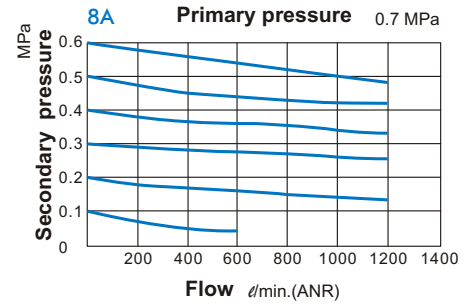
D: Auto drain valve (MADV300)  
N: Nylon bowl

FILTER ELEMENT  
Blank: 5 μm  
40u: 40 μm

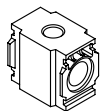
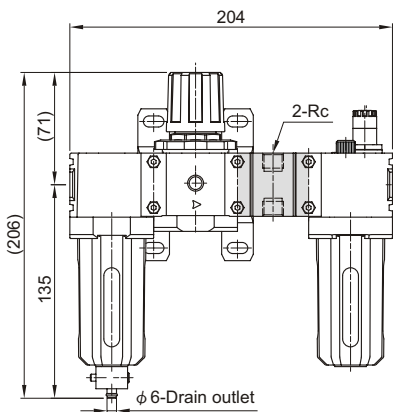
Module mounting bracket  
T8: 1/4  
T10: 3/8

PORT THREAD  
Blank: Rc thread  
G: G thread  
NPT: NPT thread

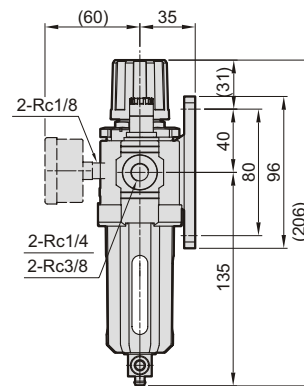
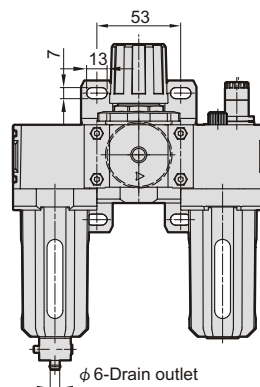
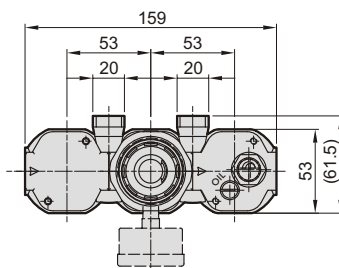
### Flow feature



### MACT300-T\* Module mounting bracket



	Rc
T8	Rc1/4
T10	Rc3/8



Mindman