

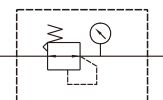
MAR403 series

AIR UNITS (R. UNIT)



Option: MP41

Symbol



Specification

Model	MAR403		
Bore No.	8A	10A	15A
Port size	1/4	3/8	1/2
Medium	Air		
Max. operating pressure	1 MPa		
Proof pressure	1.5 MPa		
Regulated pressure range	0.1~0.85 MPa		
Ambient temperature	-5~+60°C (no freezing)		
Attachment	Pressure gauge (PG-20), L-type bracket		
Weight	450 g		

Order example

MAR403 - 8A - □ - E1 - □

MODEL BORE SIZE
 8A: 1/4
 10A: 3/8
 15A: 1/2

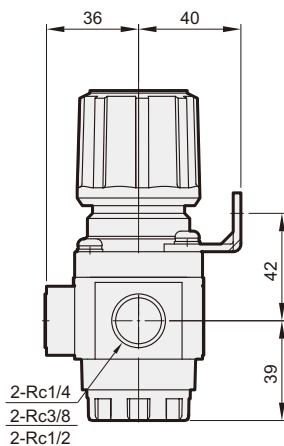
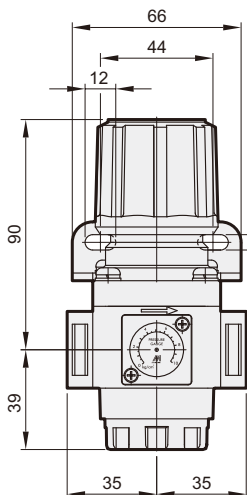
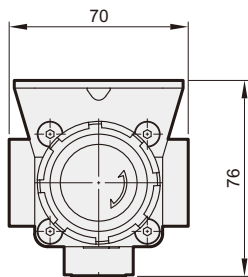
PORT THREAD
 Blank: Rc thread
 G: G thread
 NPT: NPT thread

PRESSURE SWITCH

- E1: MP41P-02
- E2: MP41P-02-QD
- E3: MP41P-02-J
- E4: MP41P-02-QD-J
- E5: MP41P-04
- E6: MP41P-04-QD
- E7: MP41P-04-J
- E8: MP41P-04-QD-J

※ Refer to page E-15 for the option of digital pressure switch MP41.

Blank: Standard type
 C: External pressure gauge (PG-40)
 P: Pressure switch (MPS series)



Flow feature

