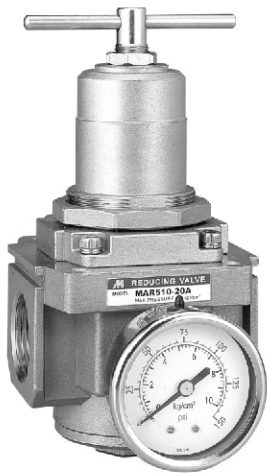


MAR510 series Stainless steel #316 type

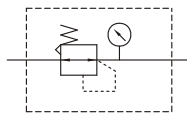
AIR UNITS (R. UNIT)



Specification

Model	MAR510	
Bore No.	20A	25A
Port size	3/4	1
Medium	Air	
Max. operating pressure	0~1 MPa	
Proof pressure	1.5 MPa	
Regulated pressure range	0.05~0.85 MPa	
Ambient temperature	-5~+60°C (No freezing)	
Attachment	Pressure gauge	
Weight	3050 g	

Symbol



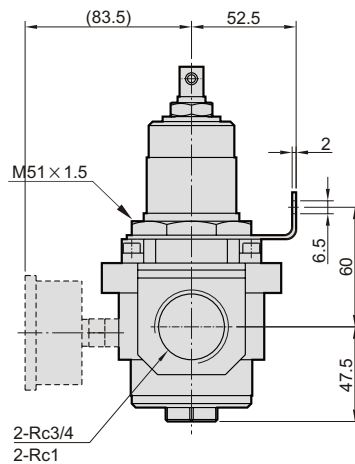
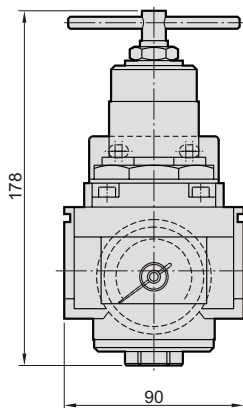
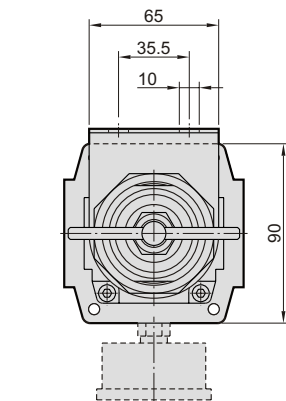
Order example

MAR510 — 20A — □

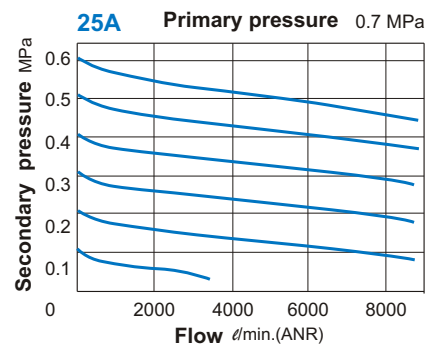
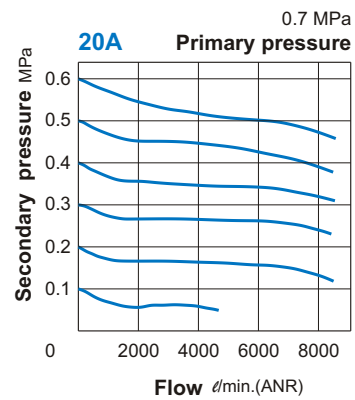
MODEL

BORE SIZE
20A: 3/4
25A: 1

PORT THREAD
Blank: Rc thread
G: G thread
NPT: NPT thread



Flow feature



Mindman