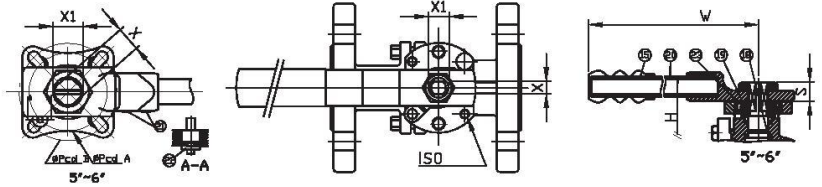


# Stainless Steel Ball Valve - ANSI 150

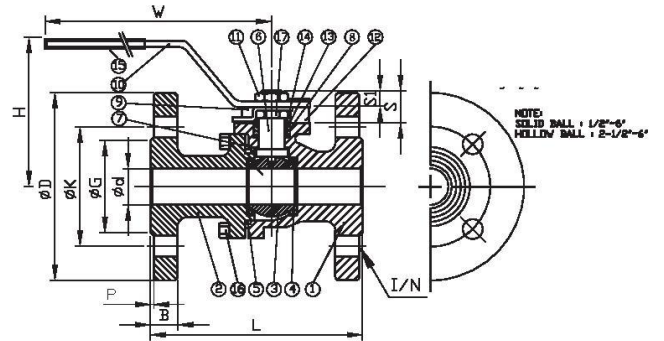


Flanged ANSI 150, Full Bore, Stainless Steel Body, Ball & Stem, PTFE Seats & Seals, Anti-Blowout Stem, Anti-Static Device, Firesafe Design.

Pressure / Temperature	
Pressure	CL150
Temperature	-20°C to 220°C



Material List			
1. Body	A351 CF8M Stainless Steel	13. Stem Ring	304 Stainless Steel
2. Cap	A351 CF8M Stainless Steel	14. Belleville Washer	301 Stainless Steel
3. Ball	A351 CF8M Stainless Steel	15. Handle Cover	PVC
4. Ball Seat	PTFE	16. Bolt	304 Stainless Steel
5. Joint Gasket	Graphite	17. Stem Nut	304 Stainless Steel
6. Stem	316 Stainless Steel	18. O-ring	Viton
7. Thrust Washer	PTFE	19. Lock Washer	304 Stainless Steel
8. Stem Packing	Graphite	20. Handle	Carbon Steel WCB
9. Stopper	304 Stainless Steel	21. Insert	Carbon Steel WCB
10. Handle	304 Stainless Steel	22. Stop Nut	304 Stainless Steel
11. Handle Nut	304 Stainless Steel	23. Square Washer	304 Stainless Steel
12. Stop Pin	304 Stainless Steel		



Dimensions																	
Size	Ød	ISO	L	ØD	ØK	ØG	B	I/N	X	X1	P	S	S1	H	W	Torque Kg	
1/2"	15	F04	108	89	60.5	35	11.2	16/4	8.6	M14x2.0	2	19	10	74	170	54	1.6
3/4"	20	F04	117	98	70	43	12.7	16/4	8.6	M14x2.0	2	24	13	77	170	78	1.9
1"	25	F05	127	108	79.5	51	14.3	16/4	10	M16x2.0	2	24	14	83	170	106	3.1
1 1/4"	32	F05	140	117	89	64	15.9	16/4	10	M16x2.0	2	29	17.5	88	170	150	4
1 1/2"	38	F07	165	127	98.5	73	17.5	16/4	12	M20x2.5	3	31	18.5	123	250	200	5.8
2"	50	F07	178	152	120.5	92	19.1	19/4	12	M20x2.5	3	32	20	132	250	290	8
2 1/2"	65	F07	190	178	139.5	105	22.3	19/4	12	M20x2.5	3	31	18.5	157	320	500	12
3"	80	F10	203	190	152.5	127	23.9	19/4	16	M27x3.0	3	48	33	166	365	770	17.9
4"	100	F10	229	229	190.5	157	23.9	19/8	16	M27x3.0	3	48	33	182	365	1100	27.7
5"	125	F10/F12	356	254	216	186	23.9	22/8	27	M32x2.0	3	47		200	530	1500	49
6"	150	F10/F12	394	279	241.5	216	25.4	22/8	27	M32x2.0	3	47		215	530	1800	60

