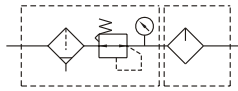


MACP410 series Stainless steel #316 type

AIR UNITS (F.R.L.UNIT)



Symbol



Specification

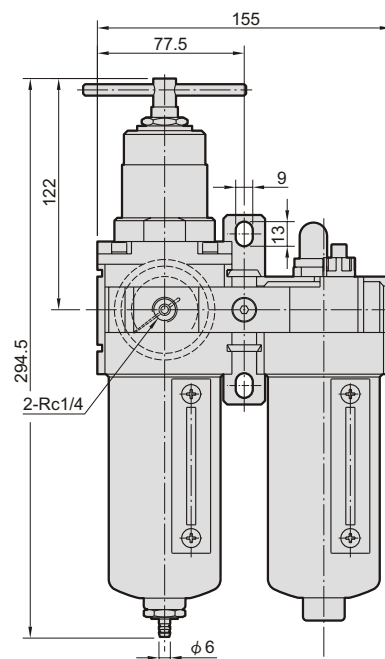
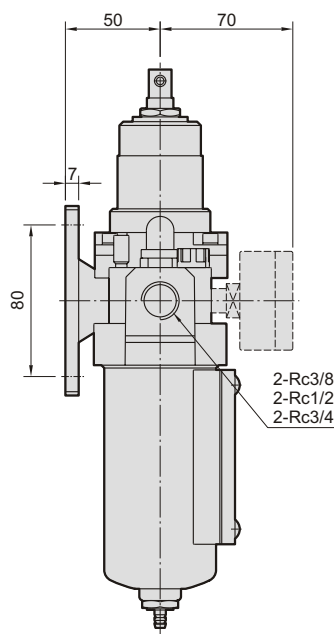
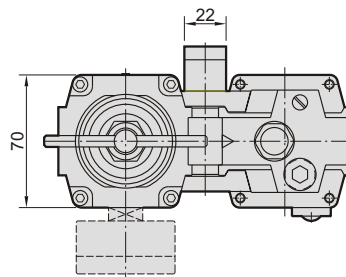
Model	MACP410		
Components	MAFR410, MAL410		
Bore No.	10A	15A	20A
Port size	3/8	1/2	3/4
Medium	Air		
Operating pressure range	0.05~1 MPa		
Proof pressure	1.5 MPa		
Regulated pressure range	0.05~0.85 MPa		
Ambient temperature	-5~+60°C (No freezing)		
Filter element	Standard: 40 μm Option: 5, 20 μm		
Lubricating oil capacity	130c.c		
Min. Flow for oil drip	50 ℓ/min		
Recommended lubricating oil	Turbine oil ISO-VG32		
Attachment	Pressure gauge, bracket		
Weight	4980 g		

※ Standard unit contains semi-auto-drain function when operating pressure below 0.05 MPa.

Order example

MACP410 – 15A – D – □ – □

MODEL
BORE SIZE
 10A: 3/8
 15A: 1/2
 20A: 3/4
D: auto drain valve
FILTER ELEMENT
 Blank: 40 μm
 5u: 5 μm
 20u: 20 μm
PORT THREAD
 Blank: Rc thread
 G: G thread
 NPT: NPT thread



Mindman