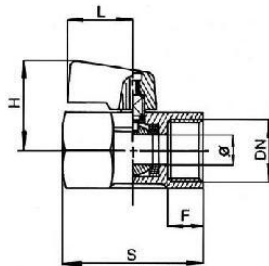


LV 4000

Brass Mini Ball Valve

Sandblasted Nickel Plated Body,
BSPP Female, Reduced Bore,
Short Handle.



Pressure/Temperature Ratings

Working Pressure	PN16
Temperature	-10°C to 90°C

Material List

Body	Sandblasted Nickel Plated Brass
Sleeve	Brass
Ball	Brass Nickel Plated
Seat	PTFE
Stem O-ring	NBR
Handle	Glass Fibre Reinforced Nylon

Reduced Bore

Dimensions in mm

DN	O	F	S	H	L	Kg
1/4"	6	11	39	29	19	0.09
3/8"	6	11	43	29	19	0.09
1/2"	10	11	47	29.5	23	0.12
3/4"	13	11	54	33	26	0.18