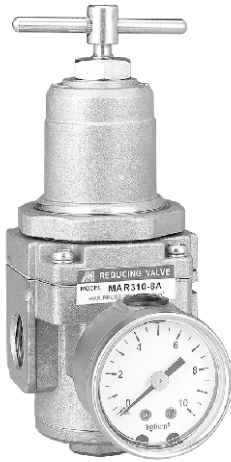


MAR310 series Stainless steel #316 type

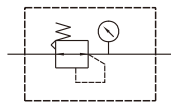
AIR UNITS (R. UNIT)



Mindman



Symbol



Specification

Model	MAR310	
Bore No.	8A	10A
Port size	1/4	3/8
Medium	Air	
Max. operating pressure	1 MPa	
Proof pressure	1.5 MPa	
Regulated pressure range	0.05~0.85 MPa	
Ambient temperature	-5~+60°C (No freezing)	
Attachment	Bracket	
Option	Pressure gauge	
Weight	1000 g	

Order example

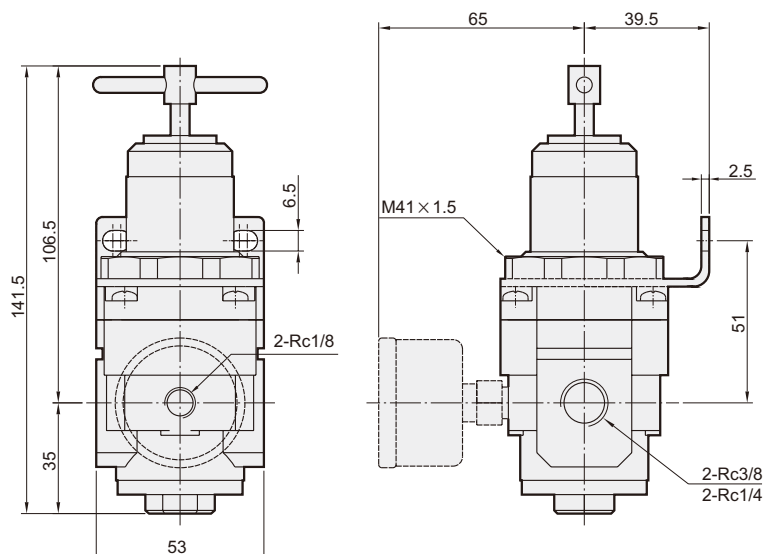
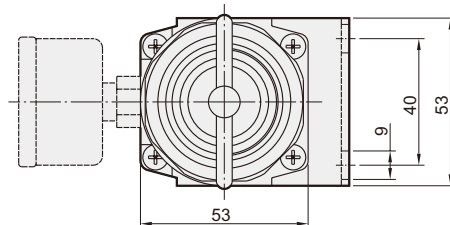
MAR310 - 8A - C - □

MODEL

BORE SIZE
8A : 1/4
10A : 3/8

PRESSURE
GAUGE

PORT THREAD
Blank: Rc thread
G: G thread
NPT: NPT thread



Mindman